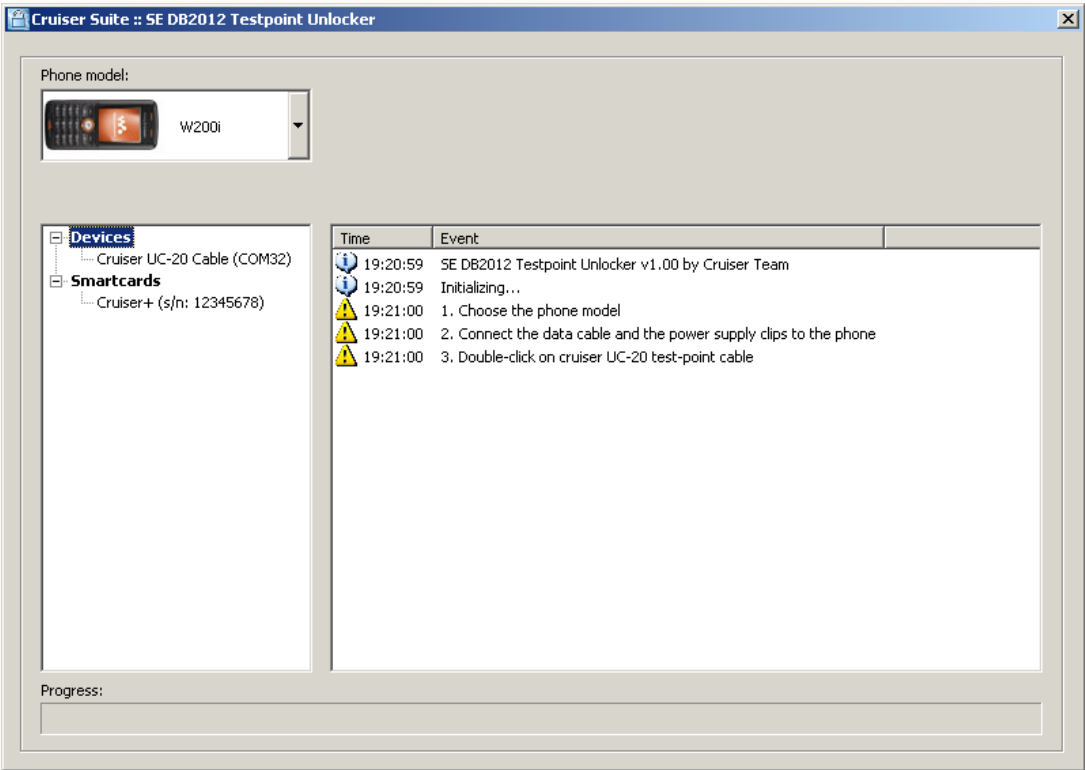


Cruiser Suite SE TestPoint Unlocker User's Guide



Contents

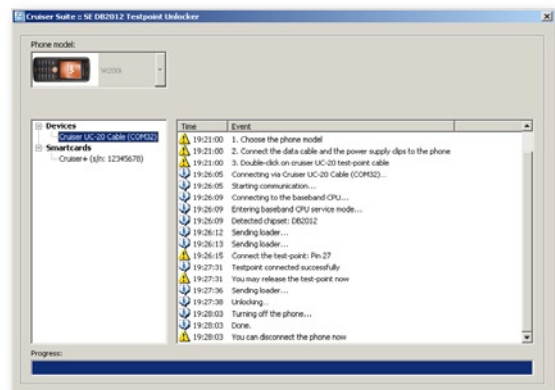
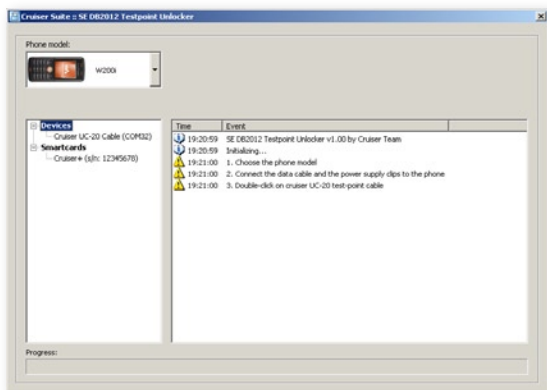
Introduction 3

Installation 4

Cable 5

Preparation 6

Unlocking procedure 7



Introduction

Cruiser Suite SE TestPoint Unlocker is an application for unlocking SonyEricsson phones. Currently supports only an Unlock-by-Patch, so the phone must be previously flashed with the desired firmware.

Currently supported platforms: DB2012 - CID 52

Currently supported phones:



W200i



W300i



W810i

Installation

1. Run installer `SeTestPointUnlocker_v1.01-installer.exe`
2. Follow the installation wizard's instructions



Cable

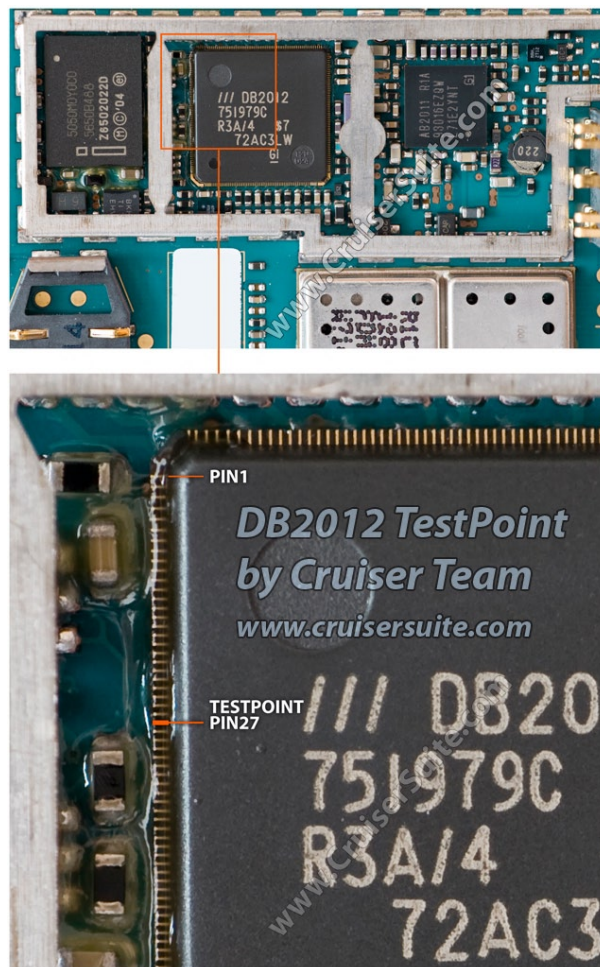
Cruiser Suite SE TestPoint Unlocker requires a new [Cruiser UC20 cable](#).

The Cruiser UC20 cable consists of:

- a data cable
- power supply clips
- a testpoint needle

Preparation

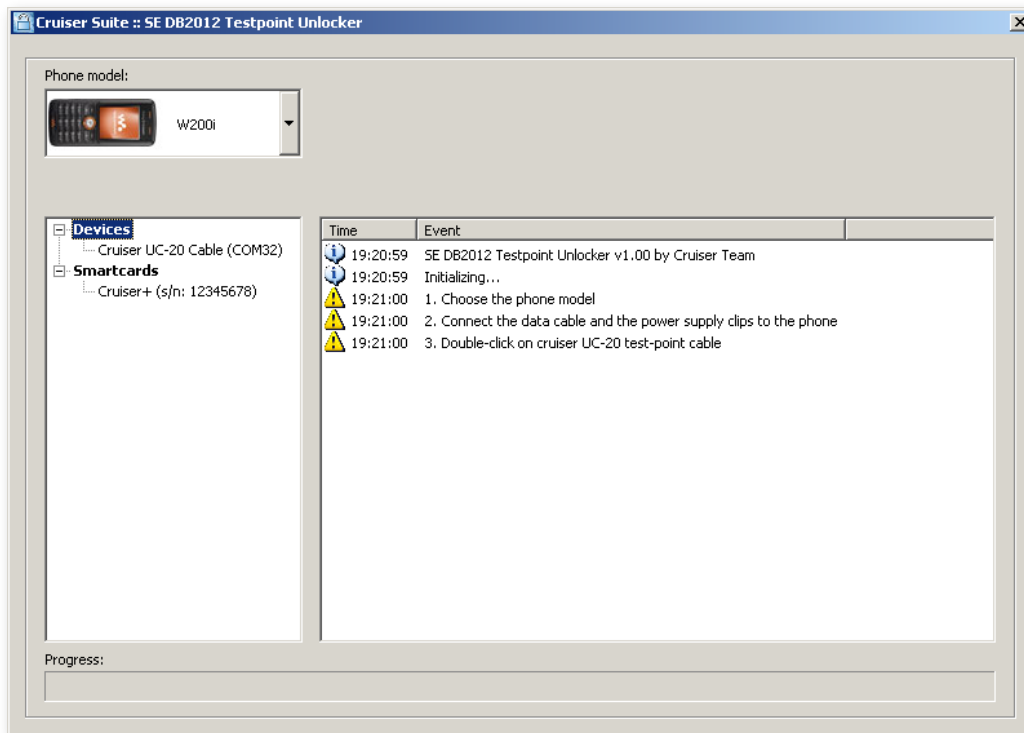
1. Make sure the phone has the desired firmware already, otherwise flash it with your favorite flashing tool.
2. Prepare the phone for the testpoint unlock.
 - remove the phone cover
 - make sure the Pin27 is clean and accessible



Note: we recommend to use a binocular microscope for either preparation and testpoint connecting

Unlocking procedure

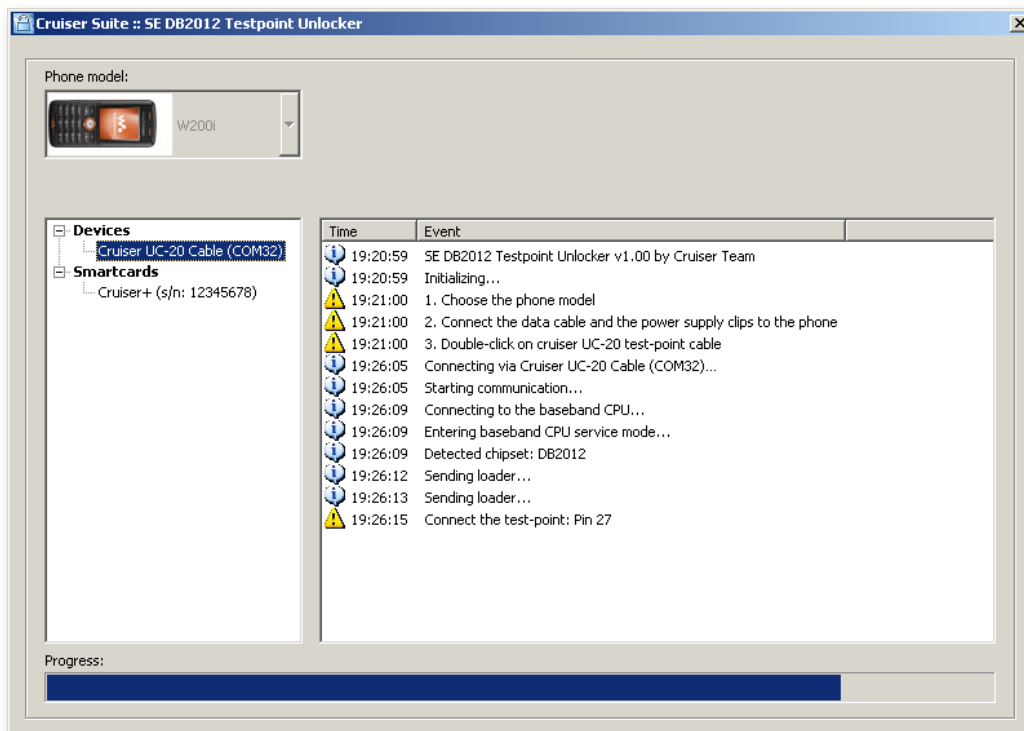
1. Make sure Cruiser+ Dongle is plugged in your computer.
Card ID must end with "-07".
2. Run `SeTestPointUnlocker.exe`



3. Choose the phone model.
4. Connect the data cable and power supply clips to the phone.
5. Double-click on the appropriate cruiser UC20 serial cable.

continued ►

6. Wait until the program asks you to connect the testpoint.

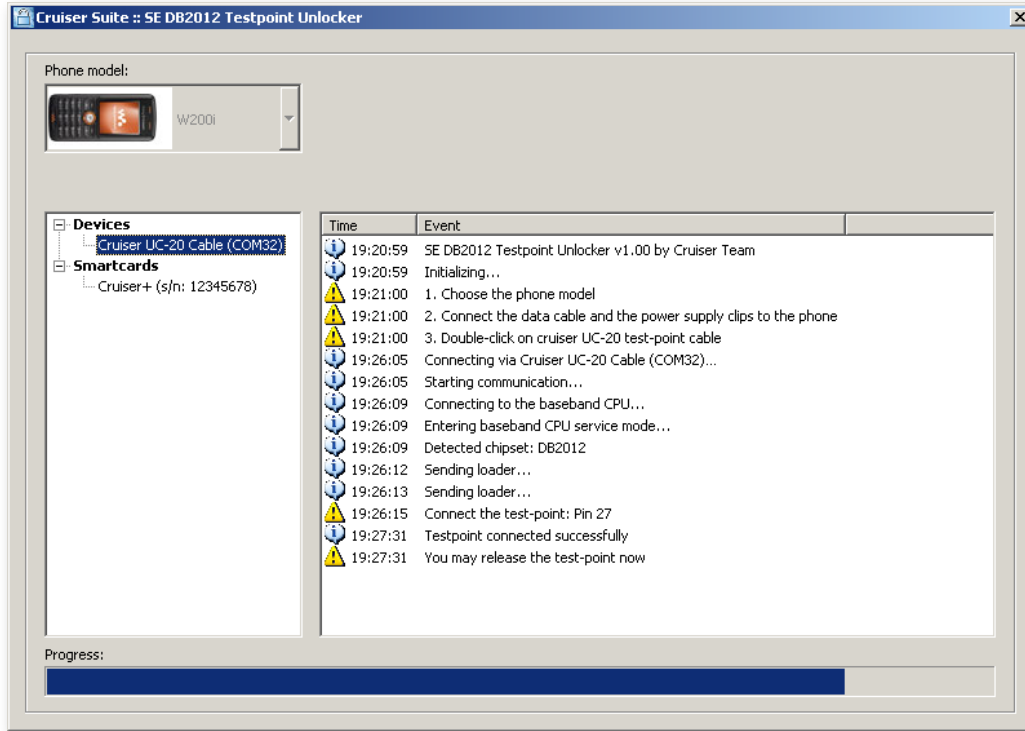


7. Connect the testpoint needle to Pin27.



continued ►

8. When informed, the testpoint may be released, the program continues with unlock procedure.



9. Disconnect the cabling from the phone when program finishes.

